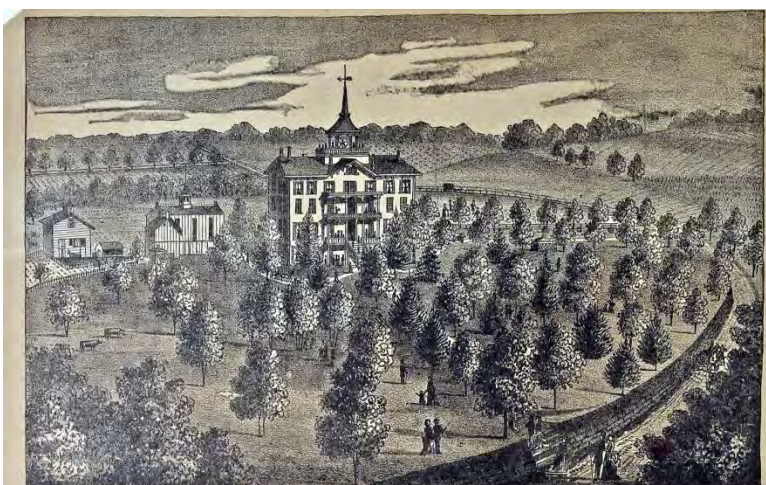


**“Wish You Were Here!
Visiting Bucks
County”**

A Guide to the Artifacts



THURLOW PARK MANSION
AND PLEASURE GROUNDS.
OWNED BY FREDRICK THURLOW HIBGAME, VIRGINIA.
THE MOST DELIGHTFUL, FASCINATING AND HEALTHFUL
SUMMER RESORT IN THE EAST.
WILL BE OPENED FOR THE ENTERTAINMENT OF GUESTS June 1st, 1891.

Thurlow Park Resort Broadside

Carversville, Bucks County
1890-91

Mercer Library Collection

Built as a school to train teachers, this site later housed a resort hotel and "pleasure park" between 1874 and 1894. The property was eventually sold and used as a sanitarium and orphanage.



Automobile Club of Philadelphia Mileage Sign

1930s

Gift of David B. Long, 2009



Crown & Eagle Antiques Shop Sign

Ray Halecy (sign painter)
New Hope, Bucks County
ca. 1960

Gift of Lynn Trusdell, 2001



Olde Hope Shoppe Antiques Sign

New Hope, Bucks County

ca. 1976

Gift of Patrick Bell, 2001



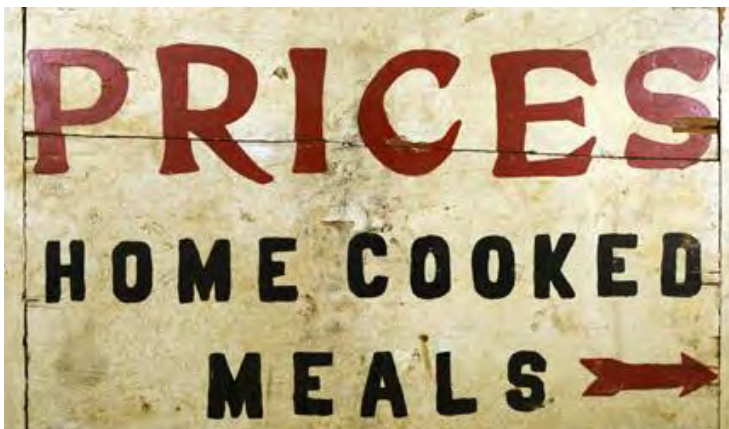
Edgewood Farm Antiques Shop Sign

Newtown, Bucks County

1960s

Gift of David B. Long, in honor of Betsy Smith BCHS Librarian 1993-2001

Since at least the 1920s, many visitors to Bucks County have come in search of antiques.



Restaurant Sign

Buckingham Township,
Bucks County

ca. 1940

Museum Purchase, 2001

"Mrs. Price's" was located on Route 202 in the Lahaska area. The eatery also

featured a roadside farm stand selling berries and fresh eggs.



Mule Barge Ride Sign

New Hope, Bucks County

Late 20th century

Gift of David Long, 2008

The Delaware Canal has long been one of Bucks County's signature scenic features. After the canal closed to commercial barge traffic in 1933, preservationists and operators sought to revive the waterway as a tourist attraction.



Restaurant Sign

Red Lion Inn

Quakertown, Bucks County

ca. 1930

Gift of David B. Long, 2013



Phillips' Mill 75th Anniversary Retrospective

Art Exhibition Broadside

Solebury Township, Bucks County

2005

Mercer Library Collection



Pennsylvania Turnpike Souvenir Pennant

Late 1950s

Gift of David B. Long, 2009

The Pennsylvania Turnpike was completed to New Jersey in 1954, and the Delaware River Bridge finished in 1956.



General Greene Inn Hotel Register

Buckingham, Bucks County
1923-1952

Gift of David Long, 2019

Called Bogart's Tavern during the American Revolution, the hostelry was later renamed the General Greene Inn. Gen. Nathaniel Greene had used

the Inn as his headquarters for a time during the war. The building still stands at the corner of Routes 263 (Old York Road) and 463 (Durham Road) in Buckingham.



**Bucks County Playhouse
Promotional Card**
New Hope, Bucks County
2014
Mercer Library Collection



**Visit Bucks County
Promotional
Postcard**
ca. 2000
*Mercer Library Collection, Gift
of Betty Davis, 2004*



25th Anniversary Souvenir Booklet
National Shrine of Our Lady of
Czestochowa
New Britain Township, Bucks County
1980
*Mercer Library Collection, Gift of Stanley Gorski,
2006*



Peddler's Village Postcard

Mercer Library Collection



Neshaminy Falls Park Photo Album

Bensalem Township,
Bucks County

1915-17

*Mercer
Collection*

Library

Opened in 1876, Neshaminy Falls Park was a popular railroad-sponsored amusement park and campground. It closed in 1936.



Fell Guest House Register

Edward and Anna Fell, Proprietors
 Holicong, Bucks County
 1919-1938

Mercer Library Purchase, 2013

The period covered by the register is one in which Bucks County was growing in reputation as a popular destination and retreat for artists, writers, actors, and other well-heeled tourists and exurban migrants. Among those who enjoyed the day and evening hospitality of the Fells – there were no overnight accommodations – were the artist George W. Sotter, anthropologist Margaret Mead, and painter Casimir Sienkiewicz, perhaps better known for his role as a banker, economist and first chairman of the Southeastern Pennsylvania Transportation Authority.



Fell Guest House Drawing

George Sotter (1879-1953)
 ca. 1930

From the "Fell Guest House"
 register.



New Hope & Ivyland Railroad Souvenir Ticket

New Hope, Bucks County

Late 20th century

Anonymous Gift, 2010



New Hope & Ivyland Railroad Souvenir Pen

New Hope, Bucks County

Late 20th century

Gift of the Estate of George M. Hart, 2009



"The Straw Ride" Forest Park Postcard

Chalfont, Bucks County

1908

Gift of David Long, 2013

Another popular Bucks County amusement park, reachable by train from Philadelphia, featured a

carousel, shooting gallery, bicycle track, bowling alley, boating – and apparently hay or straw rides.



Menlo Park Souvenir Pennant

Perkasie, Bucks County
ca. 1920s

*Gift of David B. Long,
2004*

Opened in 1892, Menlo Park's owners added a variety of attractions in the succeeding decades. Trolleys and excursion trains brought thousands of visitors to the park from Philadelphia and elsewhere. In the 1950s, Perkasie Borough purchased the site for a community park. Although most of the original attractions are gone, the 1890s carousel continues in operation today.



Entrance to Menlo Park, Perkasie

1910s

*Mercer Library
Collection*

The tracks for the trolley that brought many visitors to the park are visible in the foreground.

QUAKERTOWN & EASTERN R. R.

SPECIAL TRAIN.....

Sunday, August 12th, 1900.

TO

MENLO PARK.

The Quakertown & Eastern Railroad Company will run special trains via Philadelphia & Reading Ry. Co. to MENLO PARK to afford an opportunity to those desiring to attend the

SACRED CONCERT
by the **PIONEER BAND** of Allentown, at Menlo.

CAMP MEETING
at BELLEVILLE, PA.

REDUCED RATES.

Special Trains Will Run as Follows:

East Bound	A. M.	P. M.
MENLO PARK	8:00	6:30
QUAKERTOWN	8:07	6:37
BELLEVILLE	8:15	6:45
PLEASANT VALLEY	8:22	6:52
PERKASIE	8:30	7:00
SPRINGTOWN	8:38	7:08
WITTE	8:46	7:16
DURHAM	8:54	7:24
PURNACE JUNCTION	9:02	7:32
DURHAM PURNACE	9:10	7:40

West Bound	A. M.	P. M.
DURHAM PURNACE	8:00	7:05
PURNACE JUNCTION	8:08	7:13
DURHAM	8:16	7:21
WITTE	8:24	7:29
SPRINGTOWN	8:32	7:37
PERKASIE	8:40	7:45
PLEASANT VALLEY	8:48	7:53
QUAKERTOWN	8:56	8:01
BELLEVILLE	9:04	8:09
MENLO PARK	9:12	8:17

Excursion Rates to Menlo Park and Return.

From	To	Rate
Durham Purnace	Menlo	50c
Purnace Junction	Menlo	50c
Durham	Menlo	50c
Springtown	Menlo	1.00

A. F. BAKER, General Manager.

Menlo Park Excursion Train Broadside

Quakertown & Eastern Railroad

August 12, 1900

Mercer Library Collection



Sleepy Hollow Ranch Souvenir Pennant

Milford Township, Bucks
County
ca. 1950

*Gift of David B. Long, in
honor of Beth Lander*

Located on Route 663 between Pennsburg and Quakertown, Sleepy Hollow Ranch was founded in 1940. The owners were Elmer Newman and his brother, "Pancake Pete" Newman, and their wives, Julie and Sophie Murray Newman (sisters). The four performed together on radio and were well-known country singers of the era.

The Ranch featured a rodeo, farm animals, square dancing, food vendors, pony rides, and a country music venue. Among the major stars appearing at the Ranch were Gene Autry, Roy Rogers and Dale Evans, the Carter Family, Wayne Newton, Roy Acuff, Carl Perkins, Bill Haley, and Frankie Avalon. A fire destroyed the site in 1963 and the Ranch was not rebuilt.



The Sleepy Hollow Ranch Gang

1940s

Mercer Library Collection

The Newman brothers and their wives, sisters Julie and Sophie Murray Newman, performed on radio and in person as the "Sleepy Hollow Ranch Gang."



George Nakashima Woodworkers Pamphlet and Price Lists

New Hope, Bucks County

1962 – 1990s

Mercer Library Collection

George Nakashima (1905-1990) came to Bucks County in 1943. Forced into an internment camp during the Second World War, his release was sponsored by American architect Antonin Raymond, who had a farm in Bucks County. Setting up a studio and workshop in New Hope, Nakashima began crafting furniture in a variety of nature-inspired forms, an endeavor continued after his death by his daughter, Mira.



Mr. and Mrs. Oscar Hammerstein

Milton Rutherford,
photographer
Doylestown, Bucks County
ca. 1948

*Mercer Library Collection,
Gift of the Rutherford
Family*



Highland Farm (Oscar Hammerstein Residence)

Milton Rutherford, photographer
Doylestown, Bucks County
ca. 1950

Mercer Library Collection, Gift of the Rutherford Family

The Hammersteins purchased the farm in 1940. He died there on August 23, 1960.



Monogrammed Towel Set of Dorothy Parker

Greenald's Linens
St. Louis, Missouri
ca. 1955

Gift of Dorothy Gledhill, 2012

Writer, critic and humorist Dorothy Parker (1893-1967), along with her husband, Alan Campbell (1904-1963) purchased a farm near Pipersville, Bucks

County in the 1930s. They resided on the property for some 20 years, establishing a firm connection to Bucks County.



Dorothy Parker and Alan Campbell

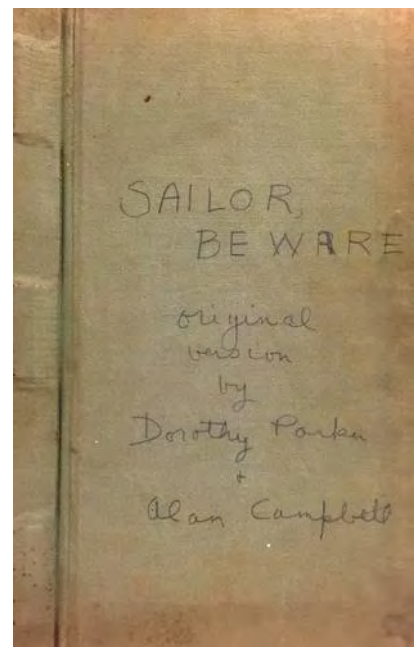
1930s – 1940s

Mercer Library Collection

Screen Play Script: "Sailor Beware"

Dorothy Parker and Alan Campbell
1934

Mercer Library Collection



This script was written in the same year that Parker and Campbell first purchased their Bucks County farm.



Tourist Cottages

Milton Rutherford, Photographer
Doylestown, Bucks County
1941

Gift of the Rutherford Family

These cottages, owned by Frank and Anna Lewis, were once located at 300 South Main Street in Doylestown.