

**“At Home in Bucks:  
Domestic Interiors  
and Furnishings”**

***A Guide to the Artifacts***



### **Silver Table Utensils**

Rogers and Hamilton  
Waterbury, Connecticut  
ca. 1890

*Gift of Mr. and Mrs. Richard Bowen, 2016*

From the Russell W. Flack family in Lumberville,  
Bucks County.



### **Steeple Clock**

Atkins Clock Company  
Bristol, Connecticut  
ca. 1870

*Bequest of Calvin H. Ruth, 2015*

Once owned by Henry and Emma (Nicholas)  
Ruth of Quakertown, Bucks County, the  
grandparents of the donor.



### **Rayo Kerosene Lamp**

Bradley and Hubbard Manufacturing Company  
Meriden, Connecticut  
ca. 1910

*Gift of Virginia and John Geyer, 2003*

Used in the home of the Sensenderfer Family of  
Ivyland, Bucks County.

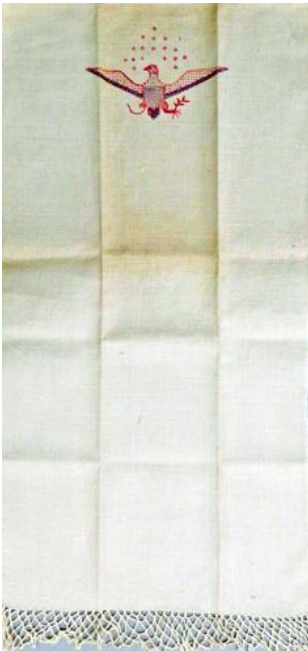


### **Glass Tumbler Set & Wire Caddy**

Unidentified manufacturer  
1950s

*Gift of the Estate of Frank Grafly, 2006*

Used in the Grafly home, Edison-Furlong Road, Doylestown.



### **Show Towel**

Doylestown, Bucks County  
ca. 1830

*Gift of Mildred Klauder Robbins, 2013*

Possibly embroidered by Deborah Swartzlander Delp (1811-1890). Such examples of a young woman's sewing and needlework skills were often hung prominently on doors in the Pennsylvania-German home.



### **Parlor Stove**

Roberts, Winner & Company  
Quakertown, Bucks County  
ca. 1890

*Gift of Harry T. Hinkel, 2003*

Stove descended in the Hinkel Family of Quakertown.



### **Side Chair**

Unidentified maker  
Doylestown, Bucks County  
ca. 1830

*Gift of Ruth A. Clawson in memory of Augustina L.F. Flack, Ludwig J. Flack, Cora A. Flack Stover, Frank Stover, Mary Jane Flack and Rachel Flack, 2000*

Chair from the home of the John and Lydia (Frankenfield) Flack Family, Spring Valley Road, Doylestown.



### **Cherry Drop-Leaf Table**

Unidentified maker  
Doylestown, Bucks County  
ca. 1860

*Gift of Ruth A. Clawson in memory of Augustina L.F. Craft, Ludwig J. Flack, Cora A. Flack Stover, Frank Stover, Mary Jane Flack and Rachel Flack.*

From the John and Lydia (Frankenfield) Flack Family home, Spring Valley Road, Doylestown.



### **Rope Bed**

Ephraim Singmaster (1823-1891)  
Richland Township, Bucks County  
ca. 1880

*Bequest of Calvin H. Ruth, 2015*

Believed to have been a wedding gift, part of the "setting out" for

Henry and Emma (Nicholas) Ruth of Quakertownh at their marriage in 1880.



### **Side Chair**

Unidentified maker  
Bucks County or Philadelphia  
ca. 1850  
*Gift of George M. Hart 2009*

Dining chair from the home of banker Josiah Hart (1811-1885), Doylestown. The needle-point seat cushion is a later addition.



### **Decorated Wardrobe Cupboard**

Attributed to "Joseph Watson"  
Kintnersville, Bucks County  
ca. 1960  
*Bequest of Shari E. Gladstone, 2001*

Purportedly constructed of old church pews, this cupboard was once owned by Arnold J. (Arnie) Nocks (1926-1992), a noted early TV producer and director in New York City. Nocks also played hockey as a practice goalie for the New York Rangers, and was an accomplished organist. It was among the furnishings used in his home near Kintnersville.



### **Radio & Phonograph Player**

Philco Corporation  
Philadelphia, Pennsylvania  
1950s  
*Gift of the Estate of Frank Grafly, 2006*

Used in the Grafly home on Edison-Furlong Road, Doylestown.



### **Television Set**

RCA Victor Corporation

Camden, New Jersey

Ca. 1950

*Gift of David Bjornsgaard, 2002*

According to the donor, this television set was among the furnishings of his family's Doylestown home. It was first used in the living room, and later moved to the dining room and eventually to his bedroom. He recalled first seeing the Beatles on the Ed Sullivan show on this set.



### **Radioptican Projector**

Keystone Manufacturing Company

Boston, Massachusetts

1920s

*Gift of John S. Moore, 2006*

A home entertainment device, this opaque projector enlarged post-cards, comics, and other images on for viewing.

The donor recalled using it with his brother at his family's home on Ashland Street in Doylestown.



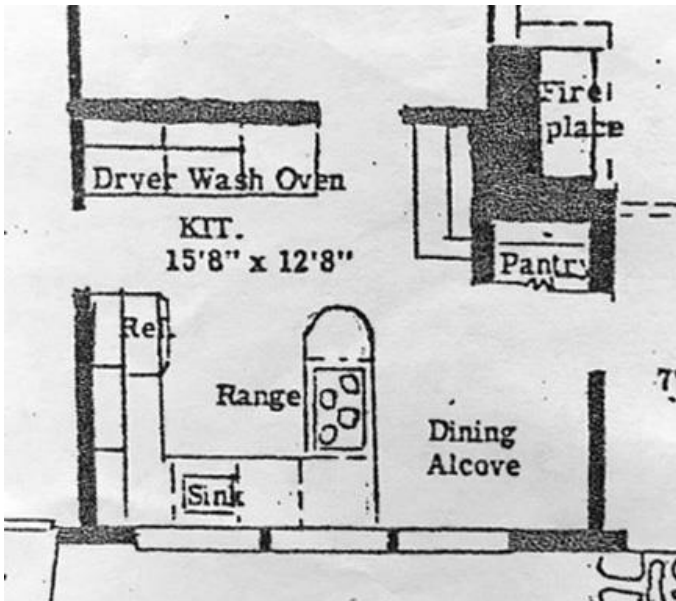
### **In-counter Mixer and Juicer Components**

Nutone, Inc.  
Cincinnati, Ohio  
ca. 1957

*Gift of Carol Rudisill, 2002*

An original feature of the kitchen in certain Levittown, Bucks County homes was this

in-counter blender, juicer and other useful appliances.



### **"Country Clubber" Kitchen Floor Plan**

Levittown, Bucks County  
1950s

*Mercer Library Collection, Levittown Community Archives*

The "Country Clubber" was the most deluxe model home offered to Levittown residents. The blender and juicer came from one of these homes.

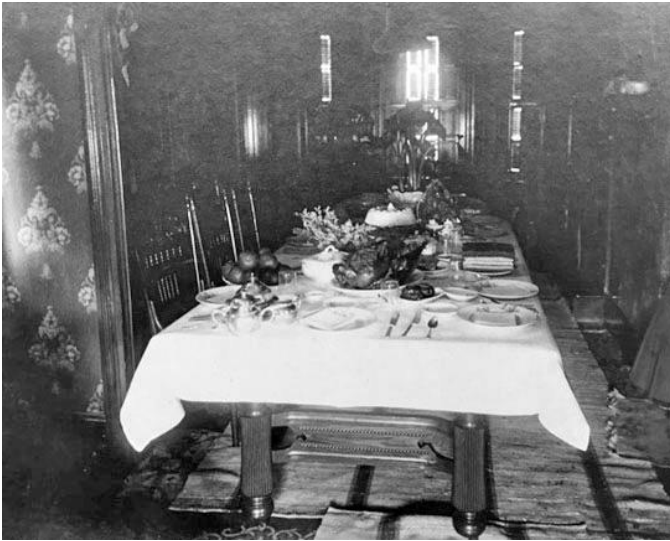


### **"Levittowner" Model Living & Dining Room**

Levittown, Bucks County  
1950s

*Mercer Library Collection, Levittown Community Archives*

Homebuyers could also choose a "Levittowner" model, a ranch-style single-story dwelling.



**Dining Room of Elmer E. Funk, 211 East Court Street**

Doylestown, Bucks County  
1900

*Mercer Library Collection, Gift of Terry McNealy*



**I. Chapman Warner Home**

Wrightstown, Bucks County  
Ca. 1900

*Mercer Library Collection, Gift of David Long, 2017*

The Warner home featured a decidedly Colonial Revival interior.



**Library and Study of William Watts Hart Davis**

Doylestown, Bucks County  
Ca. 1900

*Mercer Library Collection*

Davis (1820-1910) served as president of the Bucks County Historical Society.





**Fireplace in the Smyth House**

Milton Rutherford, photographer

Doylestown, Bucks County

1941

*Mercer Library Collection, Gift of the Rutherford Family*



**Home of Mrs. Webster Achey** (on large doors at left)

Milton Rutherford, photographer

Doylestown, Bucks County

1943

*Mercer Library Collection, Gift of the Rutherford Family*