

"A Diverse People"

A Guide to the Artifacts



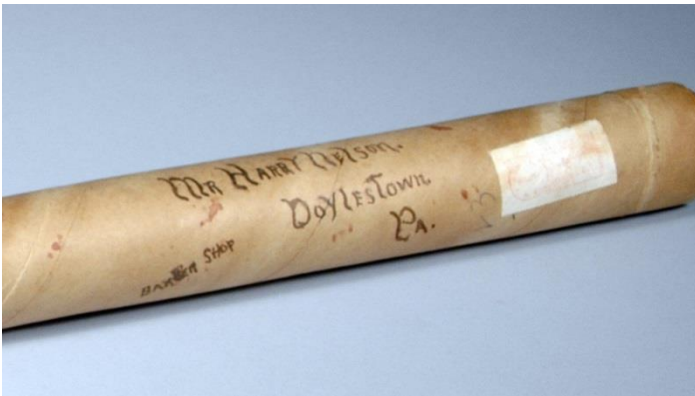
Bensalem African Methodist Episcopal Church Sabbath School Banner

Silas A. Brandschett (attributed)

Bensalem Township, Bucks County

ca. 1880

Gift of Rev. Jeanne B. Williams, 2000



Mailing Tube Addressed to Mr. Harry Nelson, Barber

Doylestown, Bucks County

1951

Anonymous Gift, 2010

African-American barber

Harry Nelson (1883-1966)

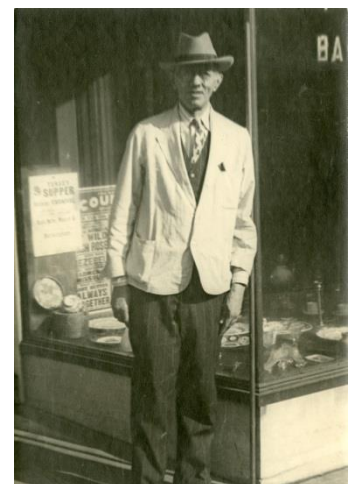
resided at 168 E. Oakland Avenue on Doylestown. His shop was located at 4 W. State Street. The mailing tube was sent to Nelson by Isaac Lee, an elevator operator at the Trenton, New Jersey railroad station. The contents of the tube were not preserved.

Portrait of Harry Nelson

Doylestown, Bucks County

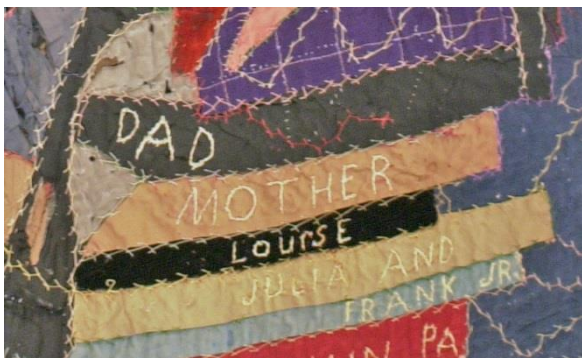
ca. 1960

Mercer Library Collection





Crazy Quilt or Throw
Brashears Family
Doylestown, Bucks County
1933
Gift of Fred F. Martin Jr., 2000



The Brashears – Frank, Laura, Louise, Julia and Frank Jr – were an African-American family residing on Church Street in Doylestown. Their quilt pays homage to the Works Progress Administration, a Depression-era federal program.



Stereograph Card of Laura and Frank Brashears
Doylestown, Bucks County
1906
Mercer Library Collection

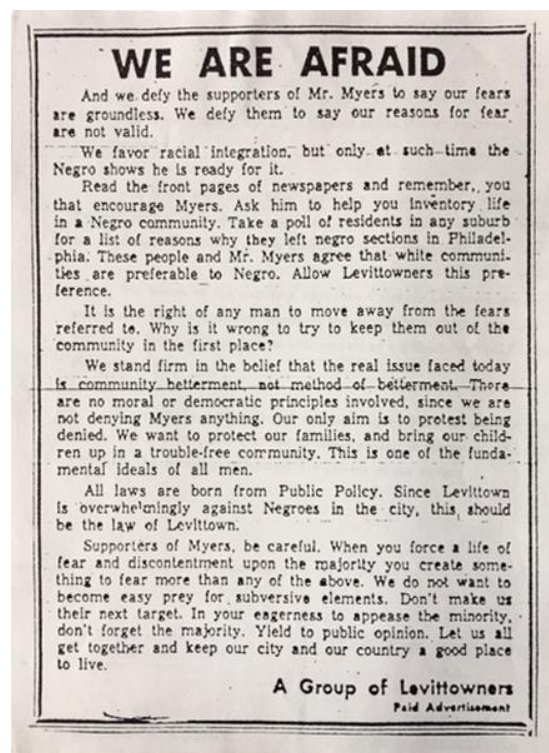
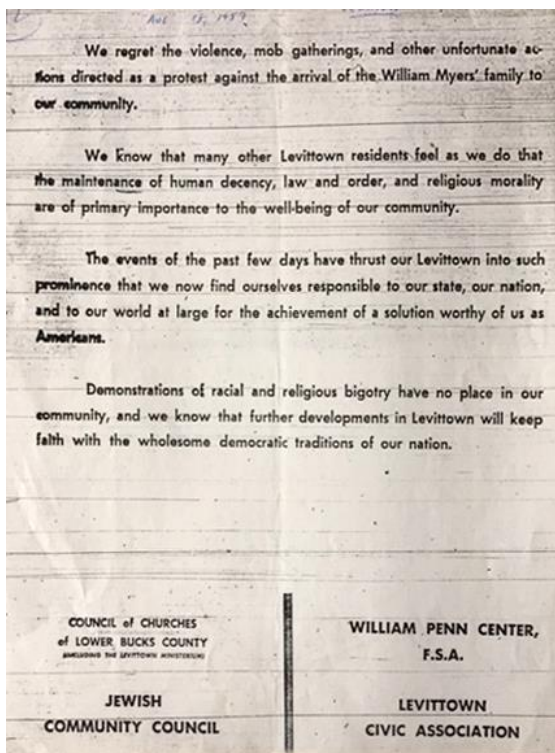


Daisy and William Myers in Their Kitchen

Levittown, Bucks County
1957

Mercer Library Collection

When William and Daisy Myers became the first African-American family to move into the all-white community of Levittown in 1957, they faced mob violence, intimidation and virulent racism from many of their neighbors.



Documents Related to the Myers' Family's Move to Levittown

1957 *Mercer Library Collection*

One of these documents supports the Myers, while the other defends efforts to preserve Levittown as a "whites only" community.



German Immigrant's Shoes

Probably Europe

Late 19th-century

Gift of Jeanne E. Shelly, 2001

These wooden-soled shoes descended in the family of Walter Smith of Solebury, Bucks County. Smith (1861-

1944) operated a shoe repair shop on his farm and is believed to have obtained the shoes from a customer who had emigrated from Germany. This individual may have worn the shoes when he came from Germany through the Port of New York earlier in the 1800s.



Earthenware Storage Pot

John Pflieger (1833-1917)

Rockhill Township, Bucks Co.

1891

Gift of David Long, 2015

John Pflieger was born in Montgomery County to German immigrant parents. His parents also boarded two other German immigrants who were potters by trade, so it is likely that the Pfliegers were operating a kiln

on their farm. When their son moved to Bucks County, he either found or built a kiln on his own farm in Rockhill, where he produced this pot late in the 1800s.



U.S. Citizenship Certificate of Rupert Hartmann (1877-1954)

Philadelphia, Pennsylvania
1931

Mercer Library Collection

Rupert Hartmann arrived in the United States in 1907. His older brother, Gebhart, was then living in Doylestown, having

emigrated from Germany in 1891. Rupert remained in Philadelphia, working for the tool-making firm of Henry Disston's Sons, though he undoubtedly visited his brother in Doylestown on many occasions.



Laying Corner Stone - St. Ann's Church

Bristol, Bucks County
1907

Mercer Library Collection

In the early 1900s, an influx of Italian immigrants swelled the population of Bristol. St. Ann's was erected to serve the growing number of Italian parishioners in the Borough.

Ann's was erected to serve the growing number of Italian parishioners in the Borough.



Levittown Jewish Center Scrapbook

Levittown, Bucks County
1955-57

Mercer Library Collection, Levittown Community Archives



**Wooden Mixing Bowl of
Annie Louise Scott Horn
(1868-1945)**

Doylestown, Bucks County
ca. 1900

*Gift of Mrs. Theodore
Rockafellow, 2004*

Born in Ireland, Annie Scott arrived in the United States sometime in the late 1880s. She married Robert S. Horn, a German immigrant, in 1891 and the couple resided on a farm on Sandy Ridge Road in Doylestown. About 1920, Henry Mercer asked Annie to demonstrate the use of a stone quern for grinding grain at a meeting of the Bucks County Historical Society – as she had learned to do in her native Ireland.



**Annie Scott Horn Demonstrating
Use of a Stone Quern**

Mercer Museum
Doylestown, Bucks County
ca. 1920

Mercer Library Collection



Condensing Coil for Whiskey Still
Carversville, Bucks County
1930s

Gift of the Dardzinski Family, 2009

Polish immigrant Walter Dardzinski settled on a farm near Carversville in the early 1900s. During the Prohibition Era of the 1920s and early 1930s – and perhaps later – he and his brother Joseph ran a farm-based corn liquor operation. Their “moonshine” was produced in their barn on a kerosene stove, and distilled into Mason jars for transport and consumption.

★ 39th ANNUAL ★
POLISH - AMERICAN

FESTIVAL

at The Shrine Of Czestochowa
654 Ferry Rd. - DOYLESTOWN

POLKA BANDS - MIDWAY RIDES
POLISH - AMERICAN FOOD
DANCING & LIVE ENTERTAINMENT
★ \$7.00 PER PERSON - ALL DAY ★

SEPT. 4 thru 6
& SEPT. 11 & 12

★ ★ ★ (OPENS 12NOON - 8pm) ★ ★ ★
— midway by —

TONS OF FUN SHOWS 610 - 385 - 6411

TRIANGLE PAPER & PRINTING CO. Phone: 610-375-0770 Fax: 610-375-0300 Web Site: www.trianglepaper.com STYLE 309

**39th Annual Polish-American
Festival Broadside**

Doylestown Township, Bucks County
2005

Mercer Library Collection

Established in the 1960s, the “Polish Festival and Country Fair” has taken place on the grounds of the Catholic National Shrine of Our Lady of Czestochowa for some 55 years.



**Blouse & Skirt of Lydia Anderson Carlson
(1873-1968)**

Montgomery Township,
Pennsylvania
ca. 1900

Gift of Edward Carlson Latta, 2004

Lydia Anderson arrived in the United States from Sweden in 1894, at the age of 21. She and her husband, Axel, became naturalized citizens in 1901. The couple settled on a farm on Upper State Road in Montgomery County, Pennsylvania, just over the Bucks County line.



Unidentified Woman of Color

W.E. Randall Photography Studio
Newtown, Bucks County
ca. 1880

Mercer Library Collection, 2015

Why is this young woman, possibly Native American, unidentified? What is her story, and why was she sitting for her portrait in a photographer's studio in Newtown in the 1880s? As the Mercer Museum continues to collect local history, how do we ensure that stories of more of

Bucks County's people – including youth, women, minorities, and the less privileged – are represented and preserved?