

# **“Made in Bucks”**

## ***A Guide to the Artifacts***



### **Tall Case Clock**

Joseph Ellicott (1732-1780)

Buckingham, Bucks County

1755-1760

*Bequest of Kenneth W. Gemmill, 2001*

Joseph Ellicott moved from Buckingham to Maryland in the 1770s and founded a flour mill in what is now Ellicott City. His son, Andrew, later served as the principal surveyor laying out Washington City, or today's District of Columbia.



### **Side Table**

Isaac Rapp (1814-1879)

Erwinna, Bucks County

1837

*Gift of David B. Long, 2019*



### **Coverlet for Catharina Auderhol (Atherholt)**

Samuel Musselman (1802-1874)

Milford, Bucks County

1840

*Gift of an Anonymous Donor, 2002*



### **Cane Salesman's Sample Case**

Bucks County Walking Sticks Company (Dan Kooker)

Point Pleasant, Bucks County

ca. 1964

*Gift of David B. Long, 2013*



### **AM/FM Radio**

Arthur Ansley Manufacturing  
Company

Doylestown, Bucks County

ca. 1955

*Gift of David B. Long, in honor  
of Beth Lander, BCHS Librarian*



### **Potato Chip Can**

Debbie Potato Chip Company

Milford Square, Bucks County

ca. 1970

*Gift of David B. Long, 2015*



## Cockpit Canopy from Buffalo F2A Fighter

Brewster Aeronautical Corp.  
Warminster, Bucks County  
1939-1941

*Gift of Clint Flack, 2021*

This rare survival is one of only two known canopies from Buffalo fighter planes produced by the Brewster firm in Warminster Township, Bucks County. The planes were largely considered

failures during the war, since Brewster's factories were not equipped for wartime production and the aircraft's armaments made the plane heavy and hard to handle. Only 509 Buffalos were produced between 1939 and 1941.



## Advertisement for Plexiglas

Rohm & Haas Corporation  
Philadelphia, Pennsylvania  
1938

*Mercer Library Collection*

This ad from *Aero Digest* notes that Rohm & Haas Plexiglas, or clear acrylic, was being employed in fabricating the canopies for the Brewster Buffalo fighter. Rohm & Haas produced this product at the firm's Bristol, Bucks County facility.



**Pintail Drake Duck Decoy**

Bob White (b. 1939)

Tullytown, Bucks County

1997

*Gift of David Long, in honor of Charles and Pearl Long, 2003*



**Signal Cannon**

The Naval Company

Doylestown, Bucks County

ca. 1980

*Gift of David B. Long, 2015*



**Darning Sampler**

Elizabeth Hibbs

Newtown School, Newtown,  
Bucks County

1821

*Gift of David B. Long, 2016*



### **"Jubilee" Model Home Painting**

Levittown, Bucks County

ca. 1960

*Gift of the Levittown Community Archives, Levittown Branch Library, Bucks County Free Library, 2012*



### **Levittown Homes Under Construction**

Levittown, Bucks County

ca. 1955

*Mercer Library Collection*



### **Ceramic Blue Jay Figurine**

Pennsbury Pottery  
Morrisville, Bucks County  
1950s

*Gift of David B. Long, 2013*

The Mercer Museum holds nearly 50 examples of Pennsbury Pottery's production, plus molds and advertising items.



### **Plaster Mold for Bird Figurine**

Pennsbury Pottery  
Morrisville, Bucks County  
1950s-60s

*Gift of David B. Long, 2012*



### **Pottery and Dinnerware Pamphlet**

Pennsbury Pottery  
Morrisville, Bucks County  
1950s

*Mercer Library Collection*

Pamphlet promoted Pennsbury Pottery's line of dinnerware. The firm was in business from 1950 to 1971, when a fire destroyed the factory.



### **Concrete & Mosaic Tile Plaque or Garden Ornament**

William Mercer (1858-1939)  
Doylestown, Bucks County  
ca. 1910-20

*Transferred from the Gloucester County Historical Society, Woodbury, New Jersey, 2003*

William Mercer, the artist-craftsman who designed this work, was the brother of Henry Mercer, the museum's founder.



### **Coaster Set**

Vulcanized Rubber & Plastics  
Company  
Morrisville, Bucks County  
1950s

*Gift of David Long, 2003*



### **Vulcanized Rubber Mill Postcard View**

Morrisville, Bucks County  
1910

*Mercer Library Collection*





**Pocket Compass**

United States Gauge  
Company  
Sellersville, Bucks County  
ca. 1940

*Gift of David Long, 2003*



**U.S. Gauge Company Employees Panoramic Photo (Detail)**

Sellersville, Bucks County  
Souvenir Publishing Company  
1928

*Mercer Library Collection, 2006*



**Employee Badge**

Merchant Shipbuilding Company  
Bristol, Bucks County

1917-18

*Gift of Clint Flack, 2019*



**Merchant Shipbuilding Company Dock**

Bristol, Bucks County

ca. 1917

*Mercer Library Collection*



**Employee Badge**

Keystone Aircraft Company  
Bristol, Bucks County

1928-32

*Gift of Clint Flack, 2019*



**Airplane Mechanics at Keystone Aircraft Corporation**

Nichols Photography Studio

Bristol, Bucks County

1931

*Mercer Library Collection*



### **Nurse's Pride Hosiery Package**

Best Made Silk Hosiery Company  
Quakertown, Bucks County  
ca. 1960

*Gift of David B. Long, 2014*



### **Nylon Stockings Package**

H-L Hosiery Company  
Quakertown, Bucks County  
1960s

*Gift of David B. Long, 2009*



### **Panoramic View of Factory Workers**

Harvey Clothing Company  
Quakertown, Bucks County  
1956

*Mercer Library Collection*



## **Sewing Thread & Wax**

American Thread Company  
Holyoke, Massachusetts  
1920-25

*Gift of Dr. and Mrs. J.  
Woodrow Savacool, 2000*

Used by Dr. Savacool, as young man, to sew baseballs for the American and National Leagues at the Hubbert Baseball Company in Perkasio, Bucks County.



## **E. Hubbert & Son Co. Employees**

Perkasie, Bucks County  
1947

*Mercer Library Collection*



## **Sweetheart Soap Box**

Manhattan Soap Company  
Bristol, Bucks County  
1941

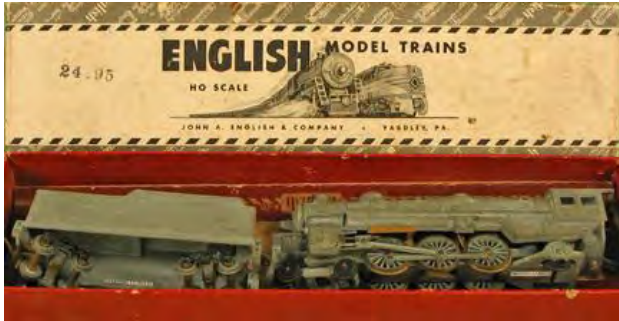
*Gift of David Long, 2003*



### **Trolley Car Model**

Pittman Electric Development Co.  
Sellersville, Bucks County  
ca. 1960

*Gift of David Long, 2005*



### **Locomotive and Tender Model**

John A. English & Company  
Yardley, Bucks County  
1935-55

*Gift of David Long, 2006*



### **Fly Tying Kit**

H. J. Noll  
Doylestown, Bucks County  
ca. 1960

*Gift of David Long, 2003*



## **Cigar Box with Clippings**

H.E. Snyder Cigar Company  
Perkasie, Bucks County

Early 20th century

*Gift of David B. Long in memory  
of Ethel and Elbert Landis, 2001*

The cigar industry flourished in Upper Bucks County in the late 1800s and early 1900s. Snyder's was just one of several successful firms. Cigar "clippings" represented waste from rolling finished cigars, but contained enough useful

tobacco for home-made cigars or "chaw."

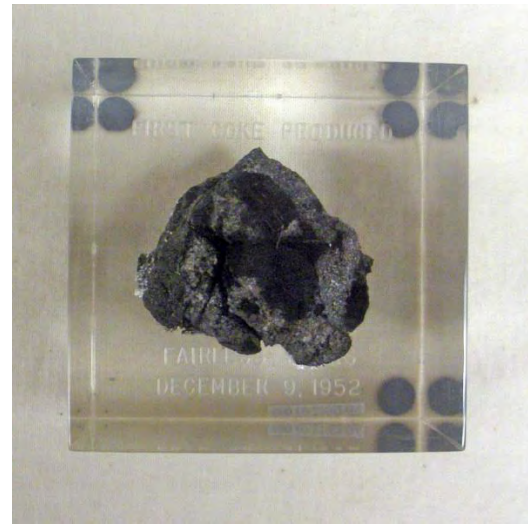


## **H.E. Snyder Cigar Company**

Perkasie, Bucks County

ca. 1925-30

*Mercer Library Collection*



**Commemorative Product  
Fragments: Rebar, Coke  
and Pig Iron**

United States Steel, Fairless  
Works

Fairless Hills, Pennsylvania  
1953

*Gift of David B. Long, 2012*

Products represent some of  
the first output of U.S. Steel's plant in Falls Township, Bucks  
County.



**U.S. Steel's Fairless Works  
Interior View**

Falls Township, Bucks County  
1950s

*Mercer Library Collection*





**Ceramic Tile Sales Sample Kit**  
Robertson Manufacturing Co.  
Morrisville, Bucks County  
ca. 1955  
*Gift of David B. Long, 2015*



**Robertson Art Tile Works Postcard View**

Morrisville, Bucks County

1915-20

*Mercer Library Collection*

Founded in 1890, the Robertson Art Tile Works shut down its tile production during World War II. It resumed production after the war as the Robertson Manufacturing Company, eventually closing in 1982.



## **Larue & Son Beverage Bottle**

New Hope, Bucks County

Late 1940s

*Gift of Linda Ostrand, 2007*

William Larue began his bottling business in the early 20<sup>th</sup> century, delivering by horse and wagon. His son joined him in the business after serving in World War II. The firm operated on Hufnagle Road in New Hope until the early 1970s.



## **Cardboard Advertisement**

Larue & Son Beverages

New Hope, Bucks County

ca. 1950

*Mercer Library Collection*



## **Whiskey Bottle**

Wilson Distilling Company  
Bristol, Bucks County

1930s-40s

*Gift of David B. Long, 2002*



## **Wilson Distilling Company Postcard View**

Bristol, Bucks County

1938

*Mercer Library Collection*



### **Seltzer Bottle**

William Neis & Sons

Doylestown, Bucks County

1930s-40s

*Gift of David B. Long, 2001*



### **Neis Bottling Works**

Doylestown, Bucks County

1920s

*Mercer Library Collection*



### **Carillon Bell Model**

Schulmerich Carillons  
Sellersville, Bucks County

Late 20<sup>th</sup> century

*Gift of David B. Long, 2009*

The Schulmerich firm produced both hand bells and carillons. The carillon portion of the business was acquired by a larger firm in 2014, and its plant in Bucks County closed.



### **Electronics Brochure**

Schulmerich Carillons  
Sellersville, Bucks County  
1960s

*Mercer Museum Library,  
Gift of David Long, 2017*



### **Ice Cream Container**

O'Boyle's  
Levittown, Bucks County  
ca. 1970

*Gift of David B. Long, 2013*



### **O'Boyle's Restaurant Postcard View**

Levittown, Bucks County  
ca. 1965

*Mercer Library Collection*